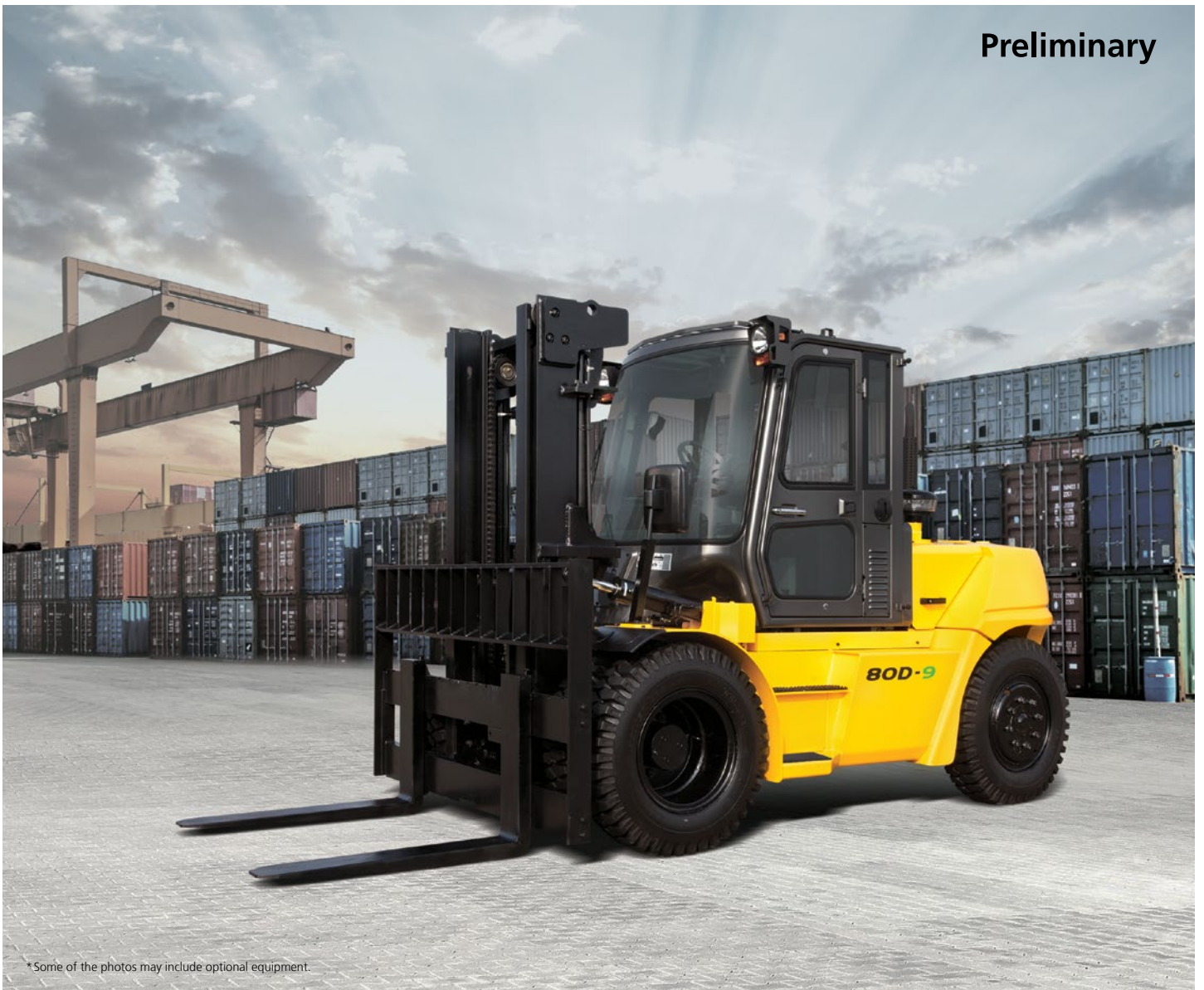


Preliminary



*Some of the photos may include optional equipment.

New Diesel Forklifts **Your satisfaction is our priority!**

80D-9

Your satisfaction is our priority!

Hyundai introduces a **new line of 9-series diesel forklift trucks.**

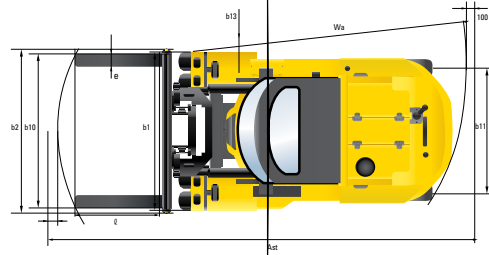
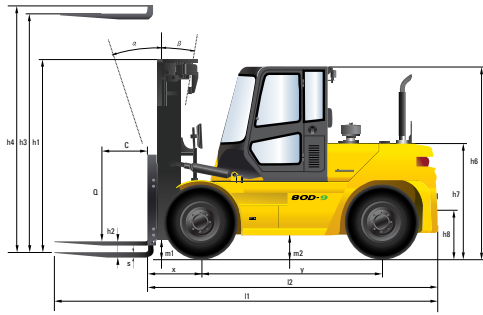
The newly designed trucks **provide every operator comfortable driving, increased productivity and easy maintenance.**

Make your business more profitable with Hyundai forklifts.



 **HYUNDAI**
HEAVY INDUSTRIES

Dimension



Specification

Identification		80D-9
1.1	Manufacturer	Hyundai
1.2	Manufacturer's type designation	80D-9
1.3	Drive: electric (battery or mains), diesel, petrol, fuel gas, manual	DIESEL
1.4	Type of operation: hand, pedestrian, standing, seated, order-picker	seated
1.5	Load capacity / rated load	kg 8,000
1.7	Load center distance	c mm 600
1.8	Load distance, center of drive axle to fork	x mm 835
1.9	Wheelbase	y mm 2,500

Weights		80D-9
2.1	Service weight	kg 11,608
2.2	Axle loading, loaded front/rear	kg 17,258 / 2,442
2.3	Axle loading, unloaded front/rear	kg 5,130 / 6,570

Wheels, Chassis		80D-9
3.1	Tires: solid rubber, superelastic, pneumatic, polyurethane	pneumatic
3.2	Tires size, front (ø x width)	9.00-20-14PR
3.3	Tires size, rear (ø x width)	9.00-20-14PR
3.5	Number of wheels front / rear (x=driven)	4 x / 2
3.6	Track width, front	b10 mm 1,632
3.7	Track width, rear	b11 mm 1,700

Basic Dimensions		80D-9
4.1	Mast / fork carriage tilt forward / backward	α/β degree 15° / 10°
4.2	Lowered mast height	h1 mm 2,675
4.3	Free lift	h2 mm 145
4.4	Lift height	h3 mm 3,040
4.5	Extended mast height	h4 mm 4,375
4.7	Overhead guard height	h6 mm 2,640
4.8	Seat height / standing height rel. to SIP	h7 mm 1,650
4.12	Coupling height	h10 mm 508
4.19	Overall length	l1 mm 5,316

Basic Dimensions		80D-9
4.20	Length to face of forks	l2 mm 4,116
4.21	Overall width	b1 mm 2,194
4.22	Forks	s/e/l mm 70 x 180 x 1200
4.23	Fork carriage ISO 2328, class / type A,B	Class IV
4.24	Fork-carriage width	b2 mm 2,277
4.31	Ground clearance, under mast, loaded	m1 mm 250
4.32	Ground clearance, center of wheelbase	m2 mm 302
4.33	Aisle width for pallets 1,000 x 1,200 crossways (L x W)	Ast mm 5,590
4.34	Aisle width for pallets 800 x 1,200 lengthways (W x L)	Ast mm 5,790
4.35	Turning radius	Wa mm 3,700
4.36	Smallest pivot point distance	b13 mm 1,354

Performance Data		80D-9
5.1	Travel speed, unloaded	km/h 35
5.2	Lift speed, loaded / unloaded	mm/s 410 / 480
5.3	Lowering speed, loaded / unloaded	mm/s 500 / 500
5.5	Max drawbar pull, loaded	N 7,139
5.7	Gradient performance, loaded	% 35.2
5.10	Service brake	FOOT(Hydraulic)

Engine		80D-9
6.1	Engine manufacturer / type	CUMMINS / QSF3.8
6.2	Engine power acc. To ISO 1585	kW/rpm 75KW(102ps)/2200
6.3	Maximum torque	kg-m/rpm 42.3/1600
6.4	No. of cylinder / displacement	/ cc 4/3800
6.5	Fuel consumption acc. To VDI cycle	l/h 8.5

Other Details		80D-9
8.1	Type of drive control	Full Auto
8.2	Operating pressure (system / attach)	bar 210 / 150
8.3	Oil volume (hydraulic)	l 115
8.4	Noise (at driver's ear according to DIN 12 053)	dB(A) 78.6

Various Attachments

